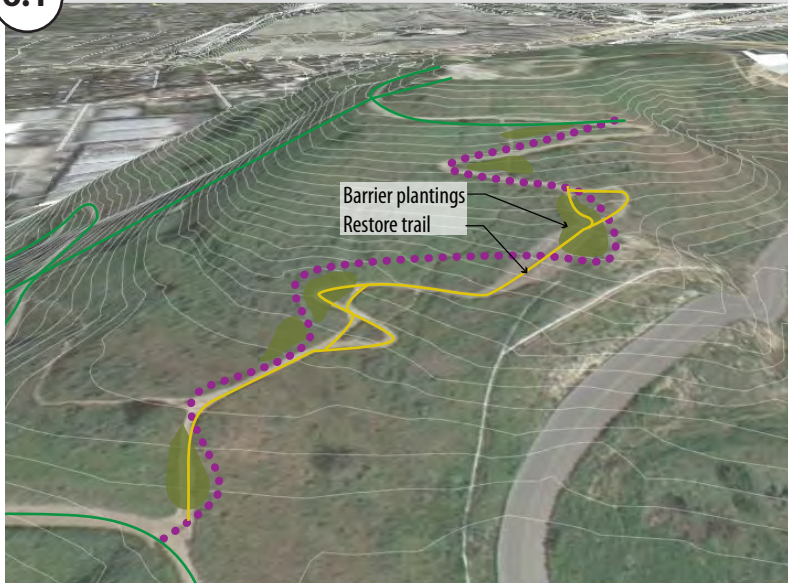


Segment 6: Baldwin Hills Scenic Overlook

Length: 4,579'

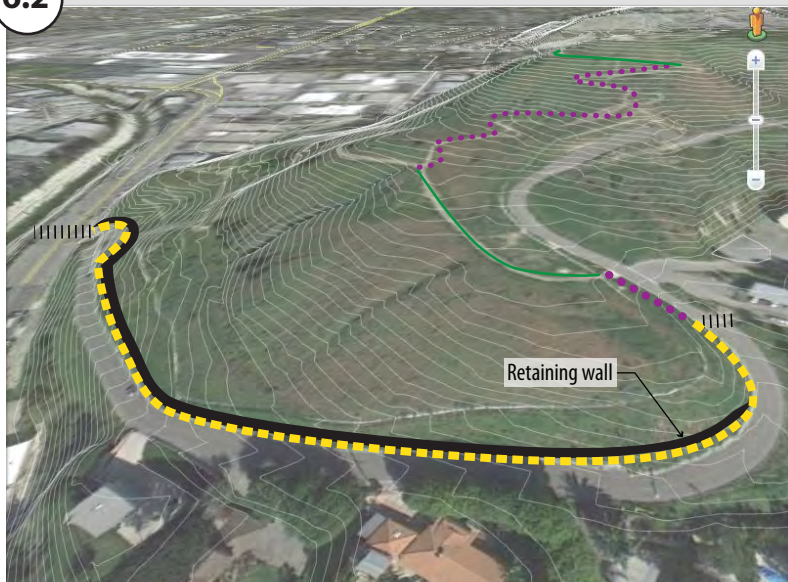
The objective is to improve connections to and through the popular Scenic Overlook, including realigning some existing unpaved trails on the northwest side to standards of State Parks/L.A. County/Park to Playa Guidelines, and providing a trail parallel to the existing paved access road that allows pedestrians to follow this route without walking in the road.

6.1 Trail Realignment and Restoration



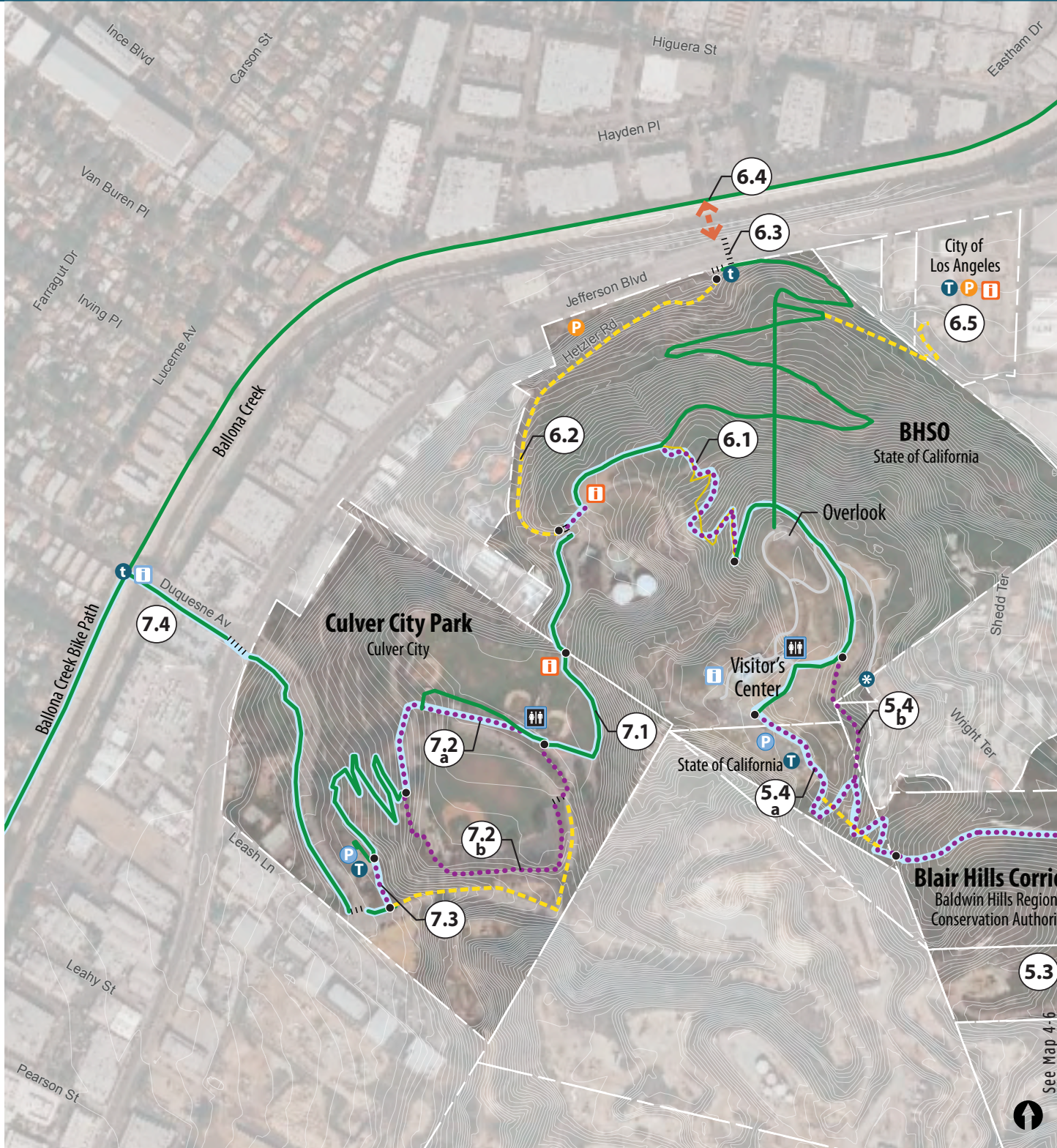
- Realign trail to provide slope gradients consistent with minimum standards and restore abandoned portions.
- Plant barrier vegetation to discourage users from creating short cuts between switchbacks.

6.2 Separated Pedestrian Path on Hetzler Road



- 6' wide paved path on the east side of Hetzler Road from the lower parking lot to sidewalk on Jefferson Road.
- Retaining walls required along the 2:1 slope. State Parks recommends a living retaining wall, which provides space for plants to grow within the, similar to the retaining wall design along Jefferson Boulevard. See proposed cross section on following page 79.
- Provide high visibility crosswalk on Hetzler Road at crossing to Culver City Park.

Map 4-7: Baldwin Hills Scenic Overlook and Culver City Park



- | | | | |
|------------------------|---------------------------|----------------------------|----------------------|
| Existing Trail | Existing Connector Trail | Existing Parking | Existing Restroom |
| Improve Existing Trail | Proposed Trail Connection | Proposed Parking | Proposed Restroom |
| Proposed Trail | Enhance Street Crossing | Existing Interpretive Site | P2P Trailhead |
| Planned Trail | Proposed Bridge | Interpretive Opportunity | P2P Gateway Entrance |
| Close & Restore Trail | Preferred Alignment | Segment End Points | P2P Access |

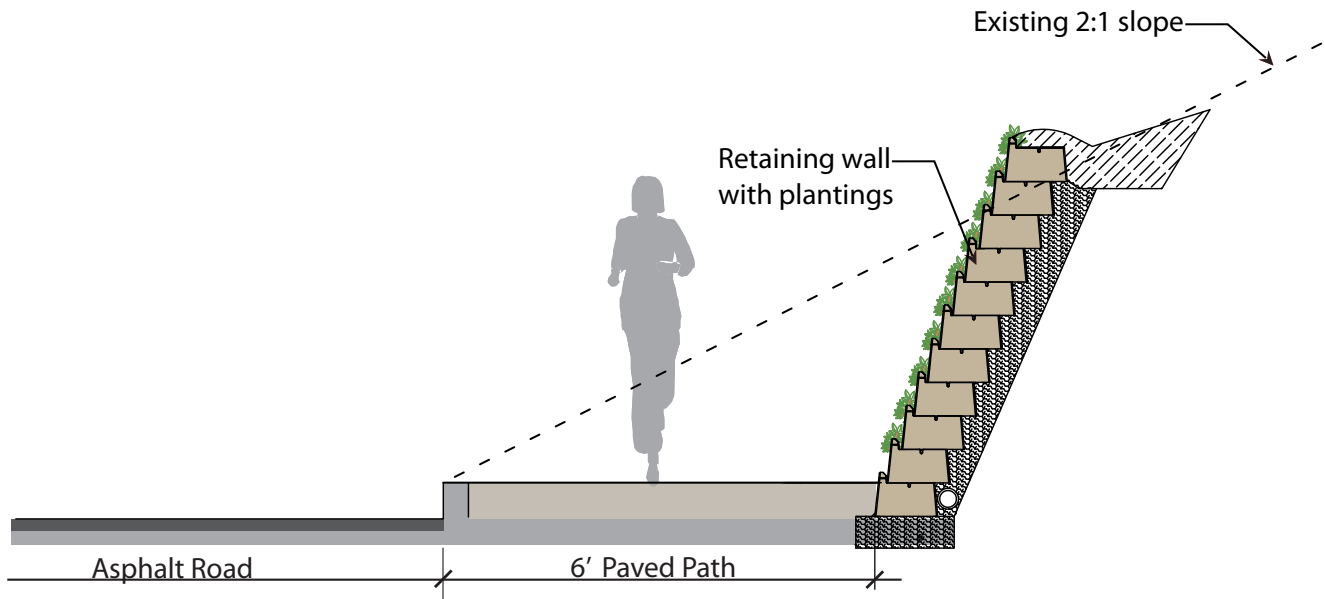
See Map 4-6



Segment 6: Baldwin Hills Scenic Overlook

6.2

Separated Pedestrian Path on Hetzler Road-Section



6.3

Intersection Improvements

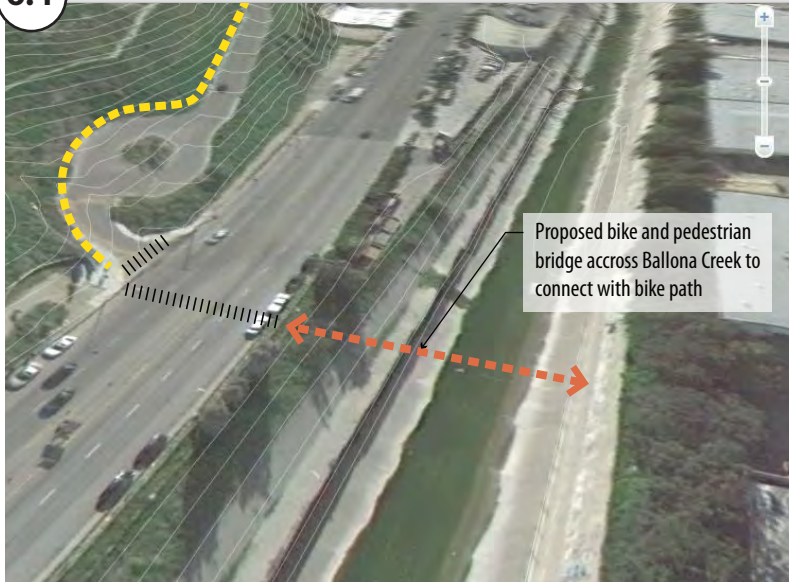


The improvements at the intersection of Jefferson Boulevard and Hetzler Road have been funded by BHC and the City of Culver City

- Install signalized intersection with pedestrian actuated signals.
- Install median, curb extensions and high visibility crosswalks.

6.4 Bicycle and Pedestrian Bridge Across Ballona Creek

Long-term improvement



- A potential long-term project to construct an at-grade bicycle and pedestrian bridge connecting to Ballona Creek Bike Path.
- Further study is required and dependent upon the future availability of grant funding.

6.5 Connection to Trailhead at 6000 Jefferson

Long-term improvement



6000 Jefferson Boulevard is a City of Los Angeles property that has been identified as a potential location for a trailhead and parking lot in previous plans.

- Proposed new accessible trail connecting from proposed trailhead to existing trail in BHSO.

Segment 7: Culver City Park

Length: 4,060'

The objective is to complete a more accessible connection from BHSO through Culver City Park to Duquesne Avenue, by providing connections to existing accessible trails. Wayfinding can assist in providing a temporary connection through the park. However, additional improvements are needed to provide for an accessible trail. Culver City Park is located on top of a closed landfill. Per the City, evidence of slope movement indicates the need for further geotechnical studies, and potentially environmental studies, as part of base information to evaluate the feasibility of new trail construction. The Plan identifies two possible alignments. According to the City, due to impacts from the unstable hillside, the interpretive boardwalk trail will need to be replaced in the future.

7.1

Improvements to Existing Trail



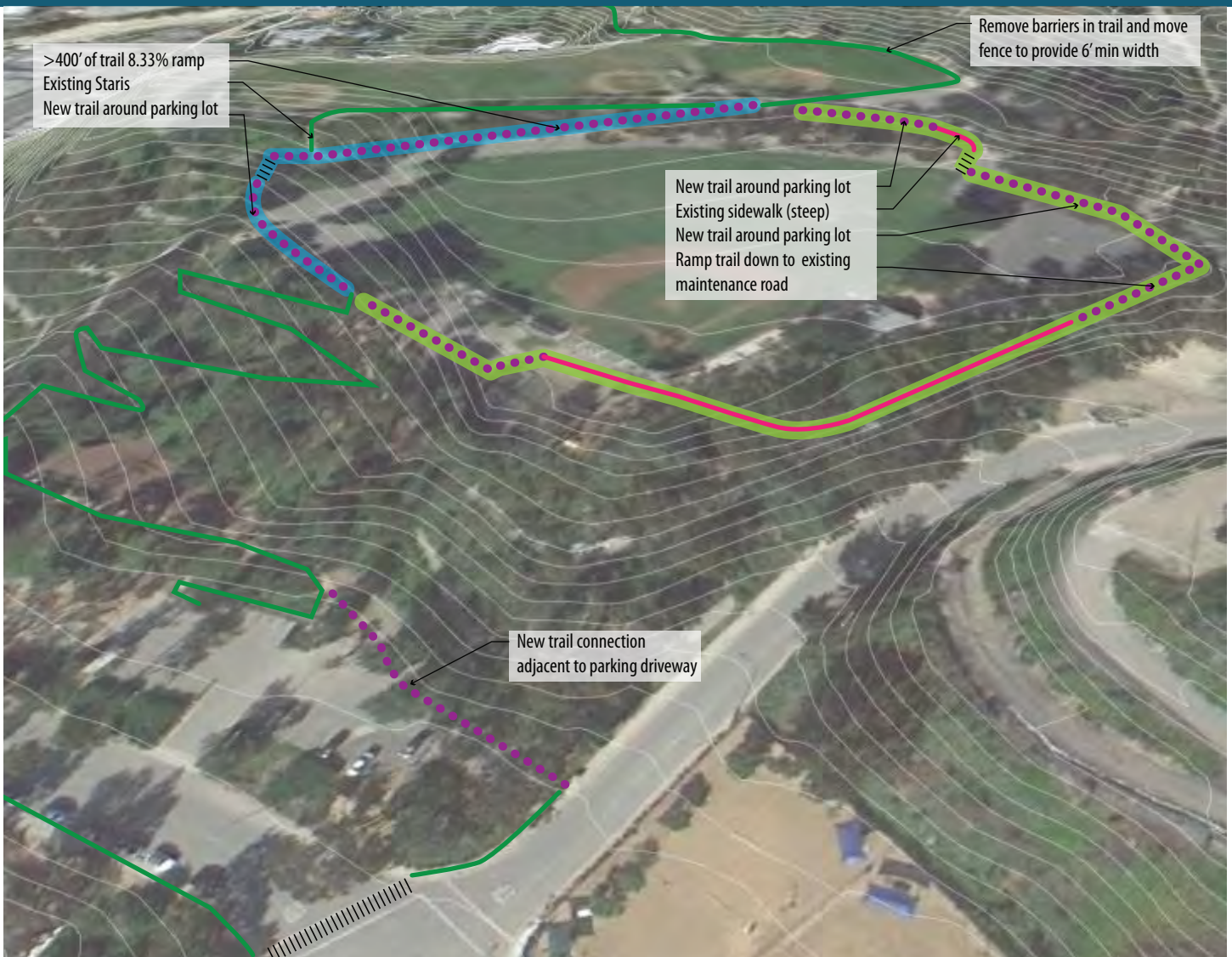
- Fine grading of existing trail around ball field to parking entrance. Improve to meet P2P and ADA standards.
- Remove barriers along path such as the Concrete Masonry Unit (CMU) wall.

7.2 a

Trail Connection to Interpretive Trail Boardwalk (Alternative a)



- Create ADA ramp with 400 plus feet of trail from the upper ball fields to the lower ball field parking area. The narrow steep slope will require retaining walls, landings and hand rails on the trail.
- New trail around parking lot to top of boardwalk ramp. Align trail around existing trees.



7.2
b Trail Connection to Interpretive Trail Boardwalk (Alternative b)



- New trail around upper parking lot to top existing sidewalk.
- Widen existing sidewalk, existing grade exceeds 10 percent.
- New trail in median between parking lot and road.
- Ramp down to existing maintenance road that wraps around ball field.
- New trail connection to top of boardwalk ramp.
- At bottom of boardwalk, a new trail connection from the interpretive trail adjacent to the ropes course along entrance drive to existing sidewalks on Duquesne.

Segment 7: Culver City Park

7.3

Trail Connection from Interpretive Trail Boardwalk to Existing Sidewalks



- At bottom of boardwalk, create a new trail connection from the interpretive trail adjacent to the ropes course along entrance drive to existing sidewalks on Duquesne.
- Directional signs and map kiosk.

7.4

Entrance to Ballona Creek Path at Duquesne Avenue



- Utilize existing sidewalks and crossings on Duquesne through Culver City Park to Ballona Creek entrance.
- Potential to widen existing sidewalk on southwest side of bridge over Ballona Creek through parking removal.